

Gohandmade
Dsign International A/S
HANNE
Madevej 11-13
6200 Aabenraa
DENMARK

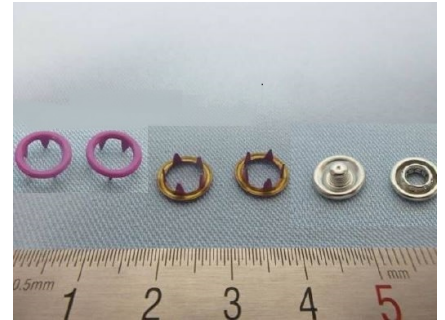
Report No.: 07717-1 SHA17
Date: 04.07.17
Order No.: SHA-10653-17
Date of order: 28.06.17
Contact: Penny Guo
Direct dial: +86(21) 60725688 x 5659
Email: penny.guo@hansecontrol.com

Test Report

Order description:

Chemical Test

Article Name	prong snap
Condition of sample at delivery	no defects
Arrival date	28.06.17
Test start date	28.06.17
Test end date	04.07.17



Limit lists

Chem.	Limit values according to legal requirements
-------	--

Final conclusion: PASS

Test results and evaluation are only related to tested items and to performed methods. Detailed information regarding measurement uncertainties are available on request.

Sara Shen

Sara Shen
Head of Report Review Team

Summary

17-031540-01 - prong snap

All test results comply with the requirements according to the scope of analysis.

Remark: The test item was conducted by an accredited subcontractor.

Overview of Chem. testing

Sample no	Type / Style
17-031540-01	-

Component list	
No	Components
01	Silvery metal button
02	Golden metal substrate
03	Purple coating

Customer requirements evaluation	Components			
	Tested	Result	Failed	Not tested
Migration of certain elements(Category 3)	01, 02, 03	PASS		

Legend: Chem.: chemical tests, Phys.: physical tests, m.s.: composite sample, n.d.: not determined, n.a.: not applicable, n.t.: not tested, i.m.: insufficient material, sum: see summary, s.c.: see component, pos: positive, neg: negative, min: minimum limit, max: maximum limit

Detailed results of Chem. testing

Sample no: 17-031540-01

Migration of certain elements(Category 3)

Sample type: Chem.

Norm: EN 71-3

Parameter	Unit	Limit	01	02	03
			Result	Result	Result
Lead (Pb) EN 71-3 category 3	mg/kg	23	<10	<10	<10
Antimony (Sb): EN 71-3 category 3	mg/kg	560	<10	<10	<10
Arsenic (As) EN 71-3 category 3	mg/kg	47	<10	<10	<10
Barium (Ba): EN 71-3 category 3	mg/kg	18750	<50	<50	<50
Cadmium (Cd): EN 71-3 category 3	mg/kg	17	<10	<10	<10
Chromium III (Cr III) EN 71-3 category 3	mg/kg	460	<5	<5	<5
Chromium VI (Cr VI) EN 71-3 category 3	mg/kg	0.2	<0.2	<0.2	<0.2
Mercury (Hg) EN 71-3 category 3	mg/kg	94	<10	<10	<10
Selenium (Se): EN 71-3 category 3	mg/kg	460	<10	<10	<10
Boron (B): EN 71-3 category 3	mg/kg	15000	<50	<50	<50
Cobalt (Co): EN 71-3 category 3	mg/kg	130	<10	<10	<10
Manganese (Mn): EN 71-3 category 3	mg/kg	15000	<50	<50	<50
Strontium (Sr): EN 71-3 category 3	mg/kg	56000	<50	<50	<50
Tin (Sn): EN 71-3 category 3	mg/kg	180000	42	<5	<5
Zinc (Zn): EN 71-3 category 3	mg/kg	46000	<50	517	280
Copper (Cu): EN 71-3 category 3	mg/kg	7700	116	319	331
Aluminum (Al): EN 71-3 category 3	mg/kg	70000	<50	<50	<50
Nickel (Ni): EN 71-3 category 3	mg/kg	930	<10	<10	<10
Organo tin compounds DI in EN 71-3 category 3	mg/kg	12	<0.02	<0.02	<0.02
Evaluation			PASS	PASS	PASS

The tested item was selected by the client. Remaining test material is disposed after 3 months. The report must not be reproduced except in full content without the written approval of the testing laboratory. The report is signed digitally and password protected. For printing use the print option -document and comments-. The amount of minor components may be insufficient to perform the announced tests. In this case the test report will carry the mark: component insufficient for lab test. If testing of all components is required we need a sufficient amount of all minor components.

Migration of certain elements(Category 3)

Test method: EN 71-3

standardized method

Extractable Chromium(VI)& Extractable Chromium (III) - With reference to EN 71 Part 3, analysis was performed by HPLC-ICP-MS.

Elements - With reference to EN 71 Part 3, analysis was performed by ICP-MS.

Extractable Organic Tin -With reference to EN 71 Part 3, analysis was performed by GC-MS.

<i>Parameter</i>	<i>CAS No</i>	<i>Parameter</i>	<i>CAS No</i>
Aluminum (Al): EN 71-3 category 3	7429-90-5	Lead (Pb) EN 71-3 category 3	7439-92-1
Antimony (Sb): EN 71-3 category 3	7440-36-0	Manganese (Mn): EN 71-3 category 3	7439-96-5
Arsenic (As) EN 71-3 category 3	7440-38-2	Mercury (Hg) EN 71-3 category 3	7439-97-6
Barium (Ba): EN 71-3 category 3	7440-39-3	Nickel (Ni): EN 71-3 category 3	7440-02-0
Boron (B): EN 71-3 category 3	7440-42-8	Organo tin compounds DIN EN 71-3 category 3	
Cadmium (Cd): EN 71-3 category 3	7440-43-9	Selenium (Se): EN 71-3 category 3	7782-49-2
Chromium III (Cr III) EN 71-3 category 3		Strontium (Sr): EN 71-3 category 3	7440-24-6
Chromium VI (Cr VI) EN 71-3 category 3		Tin (Sn): EN 71-3 category 3	7440-31-5
Cobalt (Co): EN 71-3 category 3	7440-48-4	Zinc (Zn): EN 71-3 category 3	7440-66-6
Copper (Cu): EN 71-3 category 3	7440-50-8		