

TEST-REPORT

2003-0413904R02

Client:	<i>Name:</i>	GOHANDMADE	
		DSIGN INTERNATIONAL A/S	
	<i>Street:</i>	MADEVEJ 11-13	
	<i>Place:</i>	6200 AABENRAA	
	<i>Country:</i>	DENMARK	

Device:	<i>Test item:</i>	Suspender clip	
	<i>Buyer:</i>	GOHANDMADE	
		DSIGN INTERNATIONAL A/S	
	<i>Destination:</i>	Denmark	
	<i>Age group:</i>	Infant	
	<i>Fiber content:</i>	Wood, stainless steel	
	<i>Date of receipt:</i>	2020-07-30	<i>Sample No:</i> 2004139S

Test:	<i>Description:</i>	Performance test for Suspender clip	
	<i>Standards:</i>	Client's requirement	
	<i>Notes:</i>	<p>All test items were performed by an external laboratory with required accreditation.</p> <p>All the testing result is relied on the Report No.: 180189570a001 issued by TÜV Rheinland (Shanghai) Co., Ltd., which could be checked for details.</p> <p>This report replaces Report No. 2003-0413904R01 issued by Hermes Hansecontrol Technical Testing Service (Shanghai) Company Limited for revise the client's name</p> <p>All previous versions of this report are no longer valid.</p>	
	<i>Date of report:</i>	2020-09-23	<i>Pages of report:</i>

Final result:	Pass		
 <hr style="width: 80%; margin: auto;"/> <p>Frank Chen Test Engineer</p>	 <hr style="width: 80%; margin: auto;"/> <p>Kevon Kang Test Engineer</p>		
Approved by	Reviewed by		

The test results relate only to the tested items. The report shall not be reproduced except in full without the written approval of the testing laboratory.
Die Prüfergebnisse beziehen sich ausschließlich auf das angelieferte Prüfmuster. Ohne schriftliche Genehmigung des Prüflaboratoriums ist eine auszugsweise Vervielfältigung des Prüfberichtes nicht gestattet.

Table of contents

1: Specification of Sample	3
2: Relevant Certification or Report (If the technical document is applicable)	3
3: Purpose of examination – refer to client's requirement	3
4: Photos of Sample.....	11

1: Specification of Sample	
Rated information	-
Other information	-

2: Relevant Certification or Report (If the technical document is applicable)		
Document	Certification No. or Report No. / Issued by	Compliance or not
Safety report or license	N/A	N/A
National differences	N/A	N/A
CDF	N/A	N/A

3: Purpose of examination – refer to client's requirement			
Clauses	Check points	Remark	Result
3.1	EN 12586 : 2007 + A1 : 2011 Child use and care articles - Soother holder - Safety requirements and test methods - Mechanical and Physical - Labelling	Details see below table 1	P
3.2	EN12586:2007 + A1:2011 Child use and care articles - Soother holder - 5.3.4 Nickel	Details see below table 2	P
3.3	EN12586:2007 + A1:2011 Child use and care articles - Soother holder - 5.3.7 Phthalate content	Details see below table 3	P
3.4	EN12586:2007 + A1:2011 Child use and care articles - Soother holder - 5.3.10 Monomers	Details see below table 4	P
3.5	EN12586:2007 + A1:2011 Child use and care articles - Soother holder - 5.3.3 Migration of certain elements	Details see below table 5	P
3.6	EN12586:2007 + A1:2011 Child use and care articles - Soother holder - 5.3.6.2 Formaldehyde - Wooden Components	Details see below table 6	P
3.7	EN12586:2007 + A1:2011 Child use and care articles - Soother holder - 5.3.11 Wood preservatives	Details see below table 7	P

Material List:

Item: Suspender Clip for pacifier chain

Material No.	Material	Color	Location
M001#	Whole Product	Multi color	clip(with 3 holes, provide on 2020-09-04)
M002	Wood	Nature	Buckle
M003	Plastic	White	Buckle
M004	Metal	Silver	Clip
M005	Metal	Silver	Hook

The test results relate only to the tested items. The report shall not be reproduced except in full without the written approval of the testing laboratory.
Die Prüfergebnisse beziehen sich ausschließlich auf das angelieferte Prüfmuster. Ohne schriftliche Genehmigung des Prüflaboratoriums ist eine auszugsweise Vervielfältigung des Prüfberichtes nicht gestattet.

Table 1.

EN 12586 : 2007 + A1 : 2011 Child use and care articles -Soother holder - Safety requirements and test methods (Mechanical and Physical test)

Test result:

Test No.	T001
Material No.	M001#
5.1 General requirement	
5.1.1 General	PASS*1
5.1.2 Integrity	PASS*1
5.1.3 Visual and tactile inspection	PASS
5.1.4 Holes	PASS
5.2 Mechanical requirement	
5.2.1 Impact resistance	PASS*1
5.2.2 Durability of the garment fastener	PASS
5.2.3 Tensile strength	PASS*1
8 Product information	
8.1 General	PASS
8.2 Purchase information	PASS
8.3 Instruction for use	PASS

The clause and/or sub-clause would be indicated only in the test report whichever applicable. The comprehensive result report is available upon request.

Remark:

*1 Only garment fastener was provided.

Table 2. EN 12586 : 2007 + A1 : 2011 - 5.3.4 Nickel

Test Method: Nickel - According to EN 1811:2011 + A1: 2015

The tests have been performed in succession.

Test result:

Test No.	Material No.	Trial	Surface area (cm ²)	Test solution volume (ml)	Dilution volume (ml)	Nickel released (µg/cm ² /week)	RL (µg/cm ² /week)	Regulatory Requirement (µg/cm ² /week)
T001	M004	1	1.26	1.26	5	<RL	0.05	0.5
		2	1.26	1.26	5	<RL	0.05	
		3	1.26	1.26	5	<RL	0.05	
T002	M005	1	6.24	6.24	25	<RL	0.05	0.5
		2	6.24	6.24	25	<RL	0.05	
		3	6.24	6.24	25	<RL	0.05	

Abbreviation: < = less than

RL = Reporting Limit

ml = milliliters

cm² = square centimetersµg/cm²/week = micrograms per one square centimeter per week

Table 3.EN12586:2007 + A1:2011 Child use and care articles - Soother holder - 5.3.7 Phthalate content

Test Method: Organic solvent extraction, analyzed by GCMS

Test result:

Test No.					T001
Material No.					M003
Test parameter	CAS NO	Unit	RL	Regulatory Requirement	Result
Dibutyl phthalate (DBP)	84-74-2	%	0.005		<RL
Benzylbutyl phthalate (BBP)	85-68-7	%	0.005		<RL
Diethylhexyl phthalate (DEHP)	117-81-7	%	0.005		<RL
Di-n-octyl phthalate (DNOP)	117-84-0	%	0.005		<RL
Diisodecyl phthalate (DIDP)	26761-40-0, 68515-49-1	%	0.005		<RL
Diisononyl phthalate (DINP)	28553-12-0, 68515-48-0	%	0.005		<RL
Sum (DBP+BBP+DEHP+ DNOP+DIDP+DIBP)		%	NA	0.1	<RL

Abbreviation: < = less than

RL = Reporting Limit

NA = Not Applicable

% denotes percentage

Remark:

Date of implementation	Parameter	Unit	Maximum Permissible Limit
180 days after the date of enactment/10 Feb 2009	Any children's toy or childcare article:		
	Dibutyl phthalate (DBP), Benzylbutyl phthalate (BBP) or Diethylhexyl phthalate (DEHP)	%	0.1
	Any children's toy that can be placed in a child's mouth or childcare article		
	Di-n-octyl phthalate (DNOP), Diisodecyl phthalate (DIDP) or Diisononyl phthalate (DINP)	%	0.1

The test results relate only to the tested items. The report shall not be reproduced except in full without the written approval of the testing laboratory.

Die Prüfergebnisse beziehen sich ausschliesslich auf das angelieferte Prüfmuster. Ohne schriftliche Genehmigung des Prüflaboratoriums ist eine auszugsweise Vervielfältigung des Prüfberichtes nicht gestattet.

Table 4.EN12586:2007 + A1:2011 Child use and care articles - Soother holder - 5.3.10 Monomers

Test Method: EN 71 - 10 and 11 : 2005 for Table 2D Monomers (migration)

Test result:

Test No.				T001
Material No.				M003
Test parameter	Unit	RL	Maximum Permissible Limit	Result
Acrylamide	mg/l	0.02	0.02 (Action Limit)	<RL
Bisphenol A	mg/l	0.01	0.1	<RL
Formaldehyde	mg/l	0.2	2.5	<RL
Phenol	mg/l	1	15	<RL
Styrene	mg/l	0.75	0.75	<RL

Abbreviation: < = less than

RL = Reporting Limit

mg/l = milligram per litre

NA = Not Applicable

Table 5. EN 12586 : 2007 + A1 : 2011 5.3.3 Migration of certain elements

Test Method: Test portion was extracted with acid according to EN 71-3:1994 + A1:2000/AC: 2002

Test result:

Test No.	Material No.	[mg/kg]							
		Sb	As	Ba	Cd	Cr	Pb	Hg	Se
		Maximum Permissible Limit of Any Toy Materials except Modelling Clay							
		60	25	1000	75	60	90	60	500
		Maximum Permissible Limit of Modelling Clay							
		60	25	250	50	25	90	25	500
		RL							
		2.5	2.5	2.5	2.5	2.5	2.5	2.5	
T001	M002	<RL	<RL	19.1	<RL	<RL	<RL	<RL	
T002	M003	<RL	<RL	2.8	<RL	<RL	<RL	<RL	

Abbreviation: < = less than

RL = Reporting Limit

mg/kg = milligram per kilogram

Remark:

Analytical Correction

Element	Sb	As	Ba	Cd	Cr	Pb	Hg	Se
Analytical Correction (in %)	60	60	30	30	30	30	50	60

The test results relate only to the tested items. The report shall not be reproduced except in full without the written approval of the testing laboratory.

Die Prüfergebnisse beziehen sich ausschließlich auf das angelieferte Prüfmuster. Ohne schriftliche Genehmigung des Prüflaboratoriums ist eine auszugsweise Vervielfältigung des Prüfberichtes nicht gestattet.

Table 6. EN 12586 : 2007 + A1 : 2011 5.3.6.2 Formaldehyde ? Wooden Components

Test Method: EN 717-3: 1996

Result:

Test No.	Material No.	Formaldehyde Content (mg/kg)			Regulatory Requirement	Moisture content (%)
		RL: 10				
		Trial 1	Trial 2	Mean		
T001	M002	<RL	<RL	<RL	80	6.9

Abbreviation: < = less than

RL = Reporting Limit

mg/kg = milligram per kilogram

% = percentage

kg/m³ = kilogram per cubic metre

NA = Not Applicable

The test results relate only to the tested items. The report shall not be reproduced except in full without the written approval of the testing laboratory.
 Die Prüfergebnisse beziehen sich ausschließlich auf das angelieferte Prüfmuster. Ohne schriftliche Genehmigung des Prüflaboratoriums ist eine auszugsweise Vervielfältigung des Prüfberichtes nicht gestattet.

Table 7.EN 12586 : 2007 + A1 : 2011 5.3.11 Wood preservatives

Test Method: EN 71 - 10 and 11 : 2005 for Table 2H Preservatives (other than wood preservatives)

Test result:

Test No.					T001
Material No.					M002
Test parameter	CAS NO	Unit	RL	Regulatory Requirement	Result
Phenol	108-95-2	mg/kg	10	10 (Action Limit)	<RL
1,2- Benzylisothiazolin- 3- one	2634-33-5	mg/kg	5	5 (Action Limit)	<RL
2-Methyl -4-isothiazolin -3- one	2682-20-4	mg/kg	10	10	<RL
5-Chloro -2-methyl -4-isothiazolin -3- one	26172-55-4	mg/kg	10	10	<RL
5-Chloro- 2-methyl -4-isothiazolin -3- one + 2-Methyl- 4-isothiazolin - 3- one	Various	mg/kg	15	15	<RL
Formaldehyde (free)	50-00-00	%	0.05	0.05	<RL

Abbreviation: < = less than

RL = Reporting Limit

mg/kg = milligram per kilogram

% = percentage

The test results relate only to the tested items. The report shall not be reproduced except in full without the written approval of the testing laboratory.
 Die Prüfergebnisse beziehen sich ausschließlich auf das angelieferte Prüfmuster. Ohne schriftliche Genehmigung des Prüflaboratoriums ist eine auszugsweise Vervielfältigung des Prüfberichtes nicht gestattet.

4: Photos of Sample



Photo 1: Overview of sample

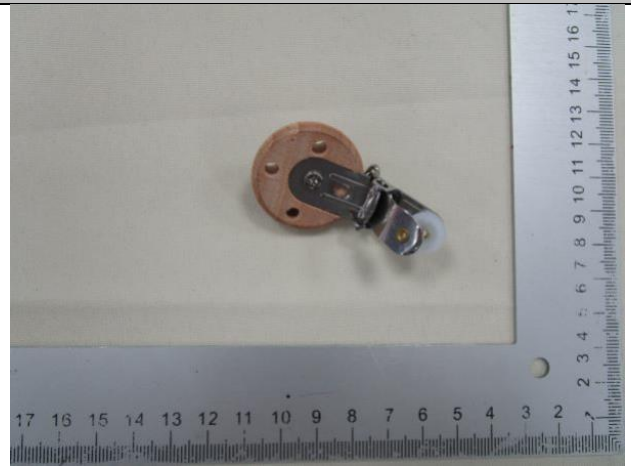


Photo 2: Overview of sample

<End of the Report>

The test results relate only to the tested items. The report shall not be reproduced except in full without the written approval of the testing laboratory.
Die Prüfergebnisse beziehen sich ausschließlich auf das angelieferte Prüfmuster. Ohne schriftliche Genehmigung des Prüflaboratoriums ist eine auszugsweise Vervielfältigung des Prüfberichtes nicht gestattet.