

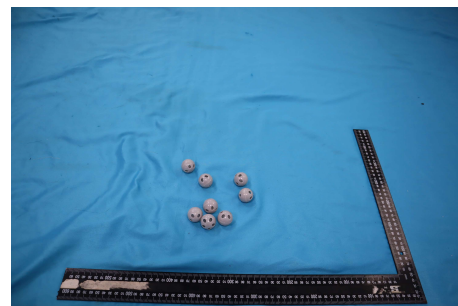
Gohandmade Dsign International A/S
HANNE
Madevej 13, 6200
Aabenraa, Denmark
DENMARK

Report No.: 04241-1 SHA21
Date: 21.05.21
Order No.: 21P-002255
Date of order: 12.05.21
Contact: Zora Zhao
Direct dial: +86 (21) 60725688 x 5658
Email: zora.zhao@hansecontrol.com

Test Report

Order description: **chemical test**

| | |
|---------------------------------|-------------|
| Article Name | Ball rattle |
| Article No. | 22039,22049 |
| Condition of sample at delivery | no defects |
| Arrival date | 12.05.21 |
| Test start date | 12.05.21 |
| Test end date | 21.05.21 |



Limit lists

| | |
|-------|---|
| Chem. | Limit values according to client request(s) |
|-------|---|

Final conclusion: PASS

Test results and evaluation are only related to tested items and to performed methods. Detailed information regarding measurement uncertainties are available on request. Unless otherwise stated, the statement of conformity decision will be made without taking the measurement uncertainty into account.


Jacky Sun
Report Reviewer

Report No.: 04241-1 SHA21
Order No.: 21P-002255
Date: 21.05.21
Page: 2 / 5

Summary

21-014044-01 - Ball rattle

Brand name : Go handmade
Buyer: Gohandmade Dsign International A/S
Country of Destination: Denmark

The following test item(s) was/were performed on selected sample(s) and/or component(s) appointed by the client.

All test results comply with the requirements according to the scope of analysis.

Report No.: 04241-1 SHA21
Order No.: 21P-002255
Date: 21.05.21
Page: 3 / 5

Overview of Chem. testing

| Sample no | Type / Style |
|--------------|--------------|
| 21-014044-01 | - |

| Component list | |
|----------------|--------------------------------|
| No | Components |
| 01 | Ball grey plastic |
| 02 | Inner ball transparent plastic |
| 03 | Inner bead transparent plastic |

| Customer requirements evaluation | Components | | | |
|---|------------|--------|--------|------------|
| | Tested | Result | Failed | Not tested |
| Migration of certain elements(EN 71-3 Category 3) | 01, 02, 03 | PASS | | |

Legend: Chem.: chemical tests, Phys.: physical tests, m.s.: composite sample, n.d.: not determined, n.a.: not applicable, n.t.: not tested, i.m.: insufficient material, sum: see summary, s.c.: see component, pos: positive, neg: negative, min: minimum limit, max: maximum limit, BL: below limit, IN: inconclusive

Detailed results of Chem. testing

Sample no: 21-014044-01

Migration of certain elements(EN 71-3 Category 3)

Sample type: Chem.

Norm: EN 71-3

| Parameter | Unit | Limit | 01 | 02 | 03 |
|---|-------|--------|-------------|-------------|-------------|
| | | | Result | Result | Result |
| Lead (Pb) EN 71-3 category 3 | mg/kg | 23 | <10 | <10 | <10 |
| Antimony (Sb): EN 71-3 category 3 | mg/kg | 560 | <10 | <10 | <10 |
| Arsenic (As) EN 71-3 category 3 | mg/kg | 47 | <10 | <10 | <10 |
| Barium (Ba): EN 71-3 category 3 | mg/kg | 18750 | <50 | <50 | <50 |
| Cadmium (Cd): EN 71-3 category 3 | mg/kg | 17 | <5 | <5 | <5 |
| Chromium III (Cr III) EN 71-3 category 3 | mg/kg | 460 | <0.2 | <0.2 | <0.2 |
| Chromium VI (Cr VI) EN 71-3 category 3 | mg/kg | 0.053 | <0.05 | <0.05 | <0.05 |
| Mercury (Hg) EN 71-3 category 3 | mg/kg | 94 | <10 | <10 | <10 |
| Selenium (Se): EN 71-3 category 3 | mg/kg | 460 | <10 | <10 | <10 |
| Boron (B): EN 71-3 category 3 | mg/kg | 15000 | <50 | <50 | <50 |
| Cobalt (Co): EN 71-3 category 3 | mg/kg | 130 | <10 | <10 | <10 |
| Manganese (Mn): EN 71-3 category 3 | mg/kg | 15000 | <50 | <50 | <50 |
| Strontium (Sr): EN 71-3 category 3 | mg/kg | 56000 | <50 | <50 | <50 |
| Tin (Sn): EN 71-3 category 3 | mg/kg | 180000 | <1 | <1 | <1 |
| Zinc (Zn): EN 71-3 category 3 | mg/kg | 46000 | <50 | <50 | <50 |
| Copper (Cu): EN 71-3 category 3 | mg/kg | 7700 | <50 | <50 | <50 |
| Aluminum (Al): EN 71-3 category 3 | mg/kg | 70000 | <50 | <50 | <50 |
| Nickel (Ni): EN 71-3 category 3 | mg/kg | 930 | <50 | <50 | <50 |
| Organo tin compounds DI in EN 71-3 category 3 | mg/kg | 12 | <3.3 | <3.3 | <3.3 |
| Evaluation | | | PASS | PASS | PASS |

Report No.: 04241-1 SHA21
Order No.: 21P-002255
Date: 21.05.21
Page: 5 / 5

The tested item was selected by the client. Remaining test material is disposed after 3 months. The report must not be reproduced except in full content without the written approval of the testing laboratory. The report is signed digitally and password protected. For printing use the print option -document and comments-. The amount of minor components may be insufficient to perform the announced tests. In this case the test report will carry the mark: component insufficient for lab test. If testing of all components is required we need a sufficient amount of all minor components.

Migration of certain elements(EN 71-3 Category 3)

Test method: EN 71-3

standardized method

Extractable Chromium(VI)& Extractable Chromium (III) - With reference to EN 71 Part 3, analysis was performed by HPLC-ICP-MS.

Elements - With reference to EN 71 Part 3, analysis was performed by ICP-MS.

Extractable Organic Tin -With reference to EN 71 Part 3, analysis was performed by GC-MS.

| <i>Parameter</i> | <i>CAS No</i> | <i>Parameter</i> | <i>CAS No</i> |
|--|---------------|---|---------------|
| Aluminum (Al): EN 71-3 category 3 | 7429-90-5 | Lead (Pb) EN 71-3 category 3 | 7439-92-1 |
| Antimony (Sb): EN 71-3 category 3 | 7440-36-0 | Manganese (Mn): EN 71-3 category 3 | 7439-96-5 |
| Arsenic (As) EN 71-3 category 3 | 7440-38-2 | Mercury (Hg) EN 71-3 category 3 | 7439-97-6 |
| Barium (Ba): EN 71-3 category 3 | 7440-39-3 | Nickel (Ni): EN 71-3 category 3 | 7440-02-0 |
| Boron (B): EN 71-3 category 3 | 7440-42-8 | Organo tin compounds DIN EN 71-3 category 3 | |
| Cadmium (Cd): EN 71-3 category 3 | 7440-43-9 | Selenium (Se): EN 71-3 category 3 | 7782-49-2 |
| Chromium III (Cr III) EN 71-3 category 3 | | Strontium (Sr): EN 71-3 category 3 | 7440-24-6 |
| Chromium VI (Cr VI) EN 71-3 category 3 | | Tin (Sn): EN 71-3 category 3 | 7440-31-5 |
| Cobalt (Co): EN 71-3 category 3 | 7440-48-4 | Zinc (Zn): EN 71-3 category 3 | 7440-66-6 |
| Copper (Cu): EN 71-3 category 3 | 7440-50-8 | | |