

Gohandmade Dsign International A/S  
HANNE  
Madevej 13, 6200  
Aabenraa, Denmark  
DENMARK

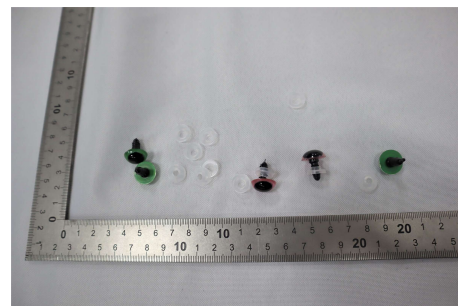
**Report No.:** 10632-1 SHA21  
**Date:** 25.10.21  
**Order No.:** 21P-022649  
**Date of order:** 20.10.21  
**Contact:** Zora Zhao  
**Direct dial:** +86 (21) 60725688 x 5658  
**Email:** zora.zhao@hansecontrol.com

## Test Report

Order description:

**Chemical Test**

Article Name	Safety eyes-Green & Pink
Article No.	17312,17313
External customer	Buyer:Gohandmade Dsign International A/S
Condition of sample at delivery	no defects
Arrival date	20.10.21
Test start date	20.10.21
Test end date	25.10.21



### Limit lists

Chem.	Limit values according to Client requirements
-------	---

## Final conclusion: PASS

*Test results and evaluation are only related to tested items and to performed methods. Detailed information regarding measurement uncertainties are available on request. Unless otherwise stated, the statement of conformity decision will be made without taking the measurement uncertainty into account.*

Justin Zhu  
Reporting Team Supervisor in Chemical Lab

Report No.: 10632-1 SHA21  
Order No.: 21P-022649  
Date: 25.10.21  
Page: 2 / 5

## Summary

21-033979-01 - Safety eyes-Green & Pink

Brand name:Go handmade  
Country of Destination:Denmark

All test results comply with the requirements according to the scope of analysis.

Report No.: 10632-1 SHA21  
Order No.: 21P-022649  
Date: 25.10.21  
Page: 3 / 5

## Overview of Chem. testing

Sample no	Type / Style
21-033979-01	-

### Component list

No	Components
01	Eye transparent/black/green plastic
02	Eye transparent/black/pink plastic
03	White plastic

### Customer requirements evaluation

	Components			
	Tested	Result	Failed	Not tested
Migration of certain elements(EN 71-3 Category 3)	01, 02, 03	PASS		

Legend: Chem.: chemical tests, Phys.: physical tests, m.s.: composite sample, n.d.: not determined, n.a.: not applicable, n.t.: not tested, i.m.: insufficient material, sum: see summary, s.c.: see component, pos: positive, neg: negative, min: minimum limit, max: maximum limit, BL: below limit, IN: inconclusive

## Detailed results of Chem. testing

Sample no: 21-033979-01

### Migration of certain elements(EN 71-3 Category 3)

Sample type: Chem.

Norm: EN 71-3

Parameter	Unit	Limit	01	02	03
			Result	Result	Result
Lead (Pb) EN 71-3 category 3	mg/kg	23	<10	<10	<10
Antimony (Sb): EN 71-3 category 3	mg/kg	560	<10	<10	<10
Arsenic (As) EN 71-3 category 3	mg/kg	47	<10	<10	<10
Barium (Ba): EN 71-3 category 3	mg/kg	18750	<50	<50	<50
Cadmium (Cd): EN 71-3 category 3	mg/kg	17	<5	<5	<5
Chromium III (Cr III) EN 71-3 category 3	mg/kg	460	<0.2	<0.2	<0.2
Chromium VI (Cr VI) EN 71-3 category 3	mg/kg	0.053	<0.05	<0.05	<0.05
Mercury (Hg) EN 71-3 category 3	mg/kg	94	<10	<10	<10
Selenium (Se): EN 71-3 category 3	mg/kg	460	<10	<10	<10
Boron (B): EN 71-3 category 3	mg/kg	15000	<50	<50	<50
Cobalt (Co): EN 71-3 category 3	mg/kg	130	<10	<10	<10
Manganese (Mn): EN 71-3 category 3	mg/kg	15000	<50	<50	<50
Strontium (Sr): EN 71-3 category 3	mg/kg	56000	<50	<50	<50
Tin (Sn): EN 71-3 category 3	mg/kg	180000	<1	<1	<1
Zinc (Zn): EN 71-3 category 3	mg/kg	46000	<50	<50	<50
Copper (Cu): EN 71-3 category 3	mg/kg	7700	<50	<50	<50
Aluminum (Al): EN 71-3 category 3	mg/kg	28130	<50	<50	<50
Nickel (Ni): EN 71-3 category 3	mg/kg	930	<50	<50	<50
Organo tin compounds DIn EN 71-3 category 3	mg/kg	12	<3.3	<3.3	<3.3
<b>Evaluation</b>			<b>PASS</b>	<b>PASS</b>	<b>PASS</b>

Report No.: 10632-1 SHA21  
Order No.: 21P-022649  
Date: 25.10.21  
Page: 5 / 5

The tested item was selected by the client. Remaining test material is disposed after 3 months. The report must not be reproduced except in full content without the written approval of the testing laboratory. The report is signed digitally and password protected. For printing use the print option -document and comments-. The amount of minor components may be insufficient to perform the announced tests. In this case the test report will carry the mark: component insufficient for lab test. If testing of all components is required we need a sufficient amount of all minor components.

## Migration of certain elements(EN 71-3 Category 3)

Test method: EN 71-3

standardized method

Extractable Chromium(VI)& Extractable Chromium (III) - With reference to EN 71 Part 3, analysis was performed by HPLC-ICP-MS.

Elements - With reference to EN 71 Part 3, analysis was performed by ICP-MS.

Extractable Organic Tin -With reference to EN 71 Part 3, analysis was performed by GC-MS.

<i>Parameter</i>	<i>CAS No</i>	<i>Parameter</i>	<i>CAS No</i>
Aluminum (Al): EN 71-3 category 3	7429-90-5	Lead (Pb) EN 71-3 category 3	7439-92-1
Antimony (Sb): EN 71-3 category 3	7440-36-0	Manganese (Mn): EN 71-3 category 3	7439-96-5
Arsenic (As) EN 71-3 category 3	7440-38-2	Mercury (Hg) EN 71-3 category 3	7439-97-6
Barium (Ba): EN 71-3 category 3	7440-39-3	Nickel (Ni): EN 71-3 category 3	7440-02-0
Boron (B): EN 71-3 category 3	7440-42-8	Organo tin compounds DIN EN 71-3 category 3	
Cadmium (Cd): EN 71-3 category 3	7440-43-9	Selenium (Se): EN 71-3 category 3	7782-49-2
Chromium III (Cr III) EN 71-3 category 3		Strontium (Sr): EN 71-3 category 3	7440-24-6
Chromium VI (Cr VI) EN 71-3 category 3		Tin (Sn): EN 71-3 category 3	7440-31-5
Cobalt (Co): EN 71-3 category 3	7440-48-4	Zinc (Zn): EN 71-3 category 3	7440-66-6
Copper (Cu): EN 71-3 category 3	7440-50-8		